

# PEDECK

## LIBERTY PORCELAIN TILES

Liberty Tiles are the ideal product for the creation of raised floor platforms in the heavy load traffic areas and are suitable for both commercial and residential applications.



Fast & Easy  
Installation



High Load  
Bearing



Non Fixed &  
Easily Accessible



Frost & Fire  
Proof



Slip & Stain  
Resistant

These innovative tiles are comprised of a 20mm single layer of load bearing porcelain stoneware, with excellent technical and aesthetic features. Recommended to be installed as part of the Strada PED System, they are long lasting and have structural inalterability in any climate conditions.

Liberty Tiles are lightweight, anti-slip, economical and aesthetically pleasing solution, requiring no sealing, they will not stain and will remain looking as good as the day they were installed.

Available in a range of simulated stone finishes, giving the aesthetics of natural stone minus the expense, maintenance and upkeep.

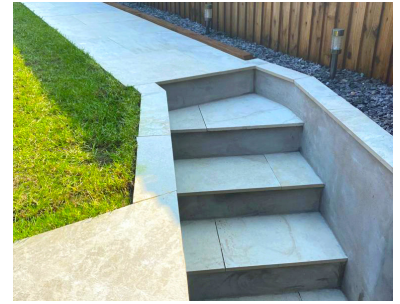
Compatible 8.5mm indoor options are also available upon request.  
All Colours available in the sizes below: 600mm x 600mm x 20mm (Rectified)

White	Beige	Light Grey	Dark Grey
600mm x 600mm x 20mm	600mm x 600mm x 20mm	600mm x 600mm x 20mm	600mm x 600mm x 20mm
600mm x 900mm x 20mm	600mm x 900mm x 20mm	600mm x 900mm x 20mm	600mm x 900mm x 20mm
1200mm x 900mm x 20mm	1200mm x 900mm x 20mm	1200mm x 900mm x 20mm	1200mm x 900mm x 20mm

For more information please contact us.

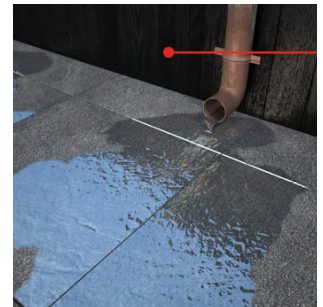
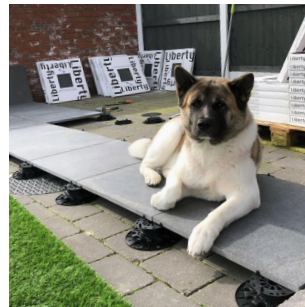
## INSTALLATION

These images show standard installation of Liberty Porcelain Tiles.  
Long cuts are completed with a wet saw, smaller cuts around objects are cut with angle grinders with a diamond blade.



## FACILITATES MAINTENANCE & DRAIN WATER

Facilitate the maintenance of wiring and piping systems.  
For a proper water outflow we suggest to lay with a 1% minimum slope.



## TECHNICAL DATA

Thickness	Chemical Resistance	Recommended Use	Bending Strength	Breakage Load	Mechanical Strength
20mm	GA UNI EN ISO 10545.13 5 UNI EN ISO 10545.14	No restriction on footwear	-50 N/mm <sup>2</sup>	Class 1 8,28 kN EN 12825	U11 EN 1339

Frost Resistance	Water Absorption	Slipping Resistance	Dry	Wet
ISO 10545.12	-0,1% ISO 10545.3	DIN 51130 DIN 51097 ASTM C1028 BCRA	R12 - 0,91 0,81	- A+B+C 0,69 0,62