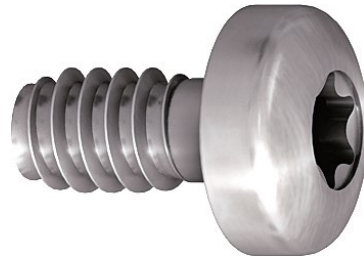


## EJOT Duro PT® S 6.0 x L



The application specific fastener for secret fix of TRESPA Meteon and Athlon panels.

### Features of the EJOT Duro PT® screw S

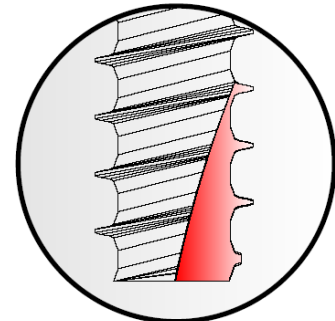
- ▲ Minimised radial stress due to low thread flank angle and cutting edge
- ▲ High tensile strength
- ▲ High torsion strength
- ▲ Known performance figures
- ▲ A4 stainless steel
- ▲ Secure Torx 30 Drive

### The cutting edge

The DELTA PT® screw S is made with a DELTA PT® thread form and has an additional feature of a milled cutting edge over approximately three pitches at the lead thread end of the screw.

### Benefits of the EJOT DELTA PT® screw S

- ▲ Secret fix
- ▲ Excellent performance
- ▲ Mechanical reliability
- ▲ Simple installation
- ▲ Fast and efficient
- ▲ Works in varied conditions
- ▲ Elimination of thread inserts
- ▲ Allows access to structure.



**EJOT® The Quality Connection**

**Not to be installed with a mechanical screw gun**