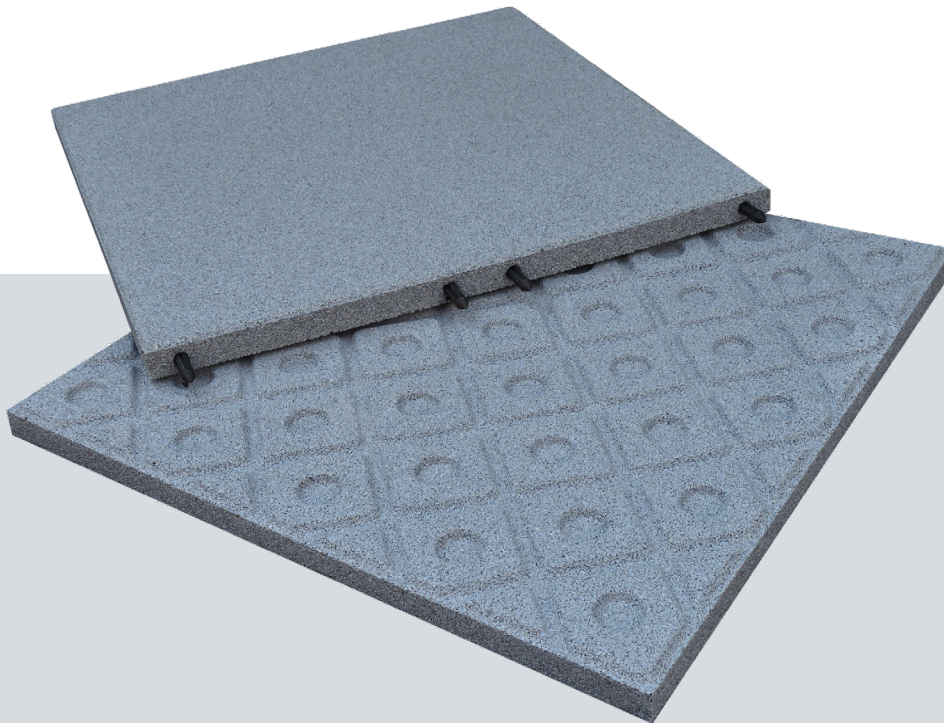


Ecotred 500 Promenade Tile

Coloured binding agents used to bond the granulate tyre materials in the Ecotred 500 Promenade Tile provide a variety of colours which can be mixed and matched in eye-pleasing combinations.



Grey



Green



Red



Black



Fully Recycled
& Recyclable



Integrated
Drainage



B2
Fire Rated



2 Year
Guarantee

Drainage channels on the bottom side ensure the free flow of water.

The slabs are easily installed over any paved level subsurface and come with an inclusive pegging system.

Material	Polyurethane-bonded recycled tyre granulate
Surface Composition	Smooth with open pores
Under Side Composition	Dimpled underside allowing free drainage
Side Composition	Pre-drilled plastic connector pins included
Colours Available	Grey, Green, Red, Black
Dimensional Information	500mm x 500mm x 30mm
Area Weight Information	Approx 20.8 kg/m ² 180 units to a pallet = 45m ² Approx 5.2Kg/slab 4 = 1m ²
Tensile Strength	147 N/cm ²
Compression Resistance	16.7 N/cm ² (before elastic deformation) 200 N/cm ² (before elastic deformation)
Hardness Shore A	28÷34
Fire Rating	B2 (DIN 4102 Part 1) - Equivalent to Euro Class E
Cold Fracture Resistance	Thermal cycle -30°C for 48h. No defects
Water Flow Capacity	Hydraulic gradient $i = 0,015/0,037 \text{ l}/(\text{m.s})$ lengthwise/ $0,022 \text{ l}/(\text{m.s})$ crosswise

For more information please contact us.